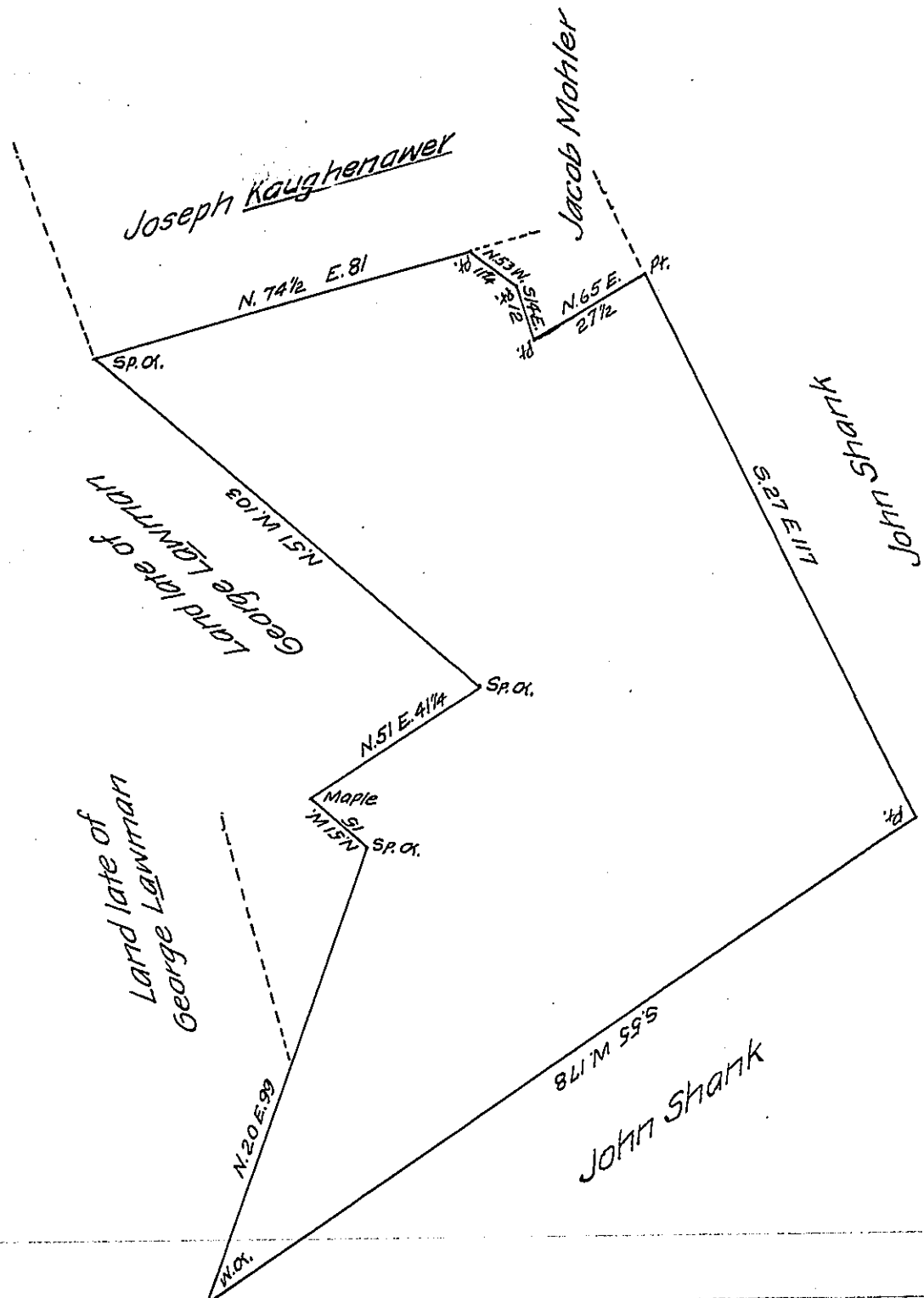


FORM NO 1.



A Draught of a Tract of Land Situate in Martick Township Lancaster County, Containing 93⁹⁵ and 88 ps. and Allowance, Surveyed the 10th Day of December A.D. 1801 for George Lowman &c. It being part of a Larger Tract of 262⁹⁵ & 88⁸⁸ Ps. and Allowance formerly surveyed unto the said George Lowman By Virtue of a Warrant Dated the 30th Day of May A.D. 1734 &c.

H. Ream, D. Sr.

To Samuel Cochran, Esq.
Surveyor General

* Say Granted to Robert Turner dated the 14. of March 1733.
A. Porter, S. G.

IN TESTIMONY that the above is a copy of the original remaining on file in the Department of Internal Affairs of Pennsylvania, made conformably to an Act of Assembly approved the 16th day of February, 1833, I have hereunto set my Hand and caused the Seal of said Department to be affixed at Harrisburg, this: twelfth day of November 1907.

Henry Howard
Secretary of Internal Affairs.